

THE ROSE



KATHARINE
HOUSE
HOSPICE

ISSUE NO. 57
SPRING 2022
WWW.KHH.ORG.UK



BEREAVEMENT
SUPPORT

MOONLIGHT
WALK

OUR
SUPPORTERS

YEAR
ROUND-UP

Issue No. 57 Spring 2022

Katharine House Hospice
Aynho Road
Adderbury
Banbury
OX17 3NL

Tel: (Main) 01295 811 866
Tel: (Fundraising) 01295 816 484
Email: enquiries@khh.org.uk
Website: www.khh.org.uk
Reg. Charity No. 297099

Katharine House Hospice patrons:
The Rt Hon Sir Tony Baldry PC DL
The Rt Hon The Lord Heseltine CH PC
Lord Saye and Sele DL

Find us on



katharinehouse



@khhosp



khhosp

Issue 57
Spring 2022
Editor: Karen Welsh

© 2022 Katharine House Hospice
All Rights Reserved

In some instances, names and photographs
have been changed to protect the privacy of
patients and their families.



Contents

- 3** CEO Welcome
- 4** Bereavement – we're here for you
- 5** Christmas round-up
- 6** Community in action
- 8** Year round-up
- 10** Our supporters
- 12** Our local businesses
- 14** Leave a lasting legacy
- 15** What's coming up
- 15** Our Survey says
- 16** Moonlight Walk 2022

KATHARINE HOUSE HOSPICE

SAVE THE DATE!
Make a Will Fortnight
3-14 October
2022

Keep an eye on our website for more info
Make a Will Fortnight
www.khh.org.uk/wills

© Katharine House Hospice 2022

THE ROSE

Hello and welcome to The Rose, our new look supporter magazine, designed to update you on everything that is going on in your hospice.

There is so much to tell you about in this edition, including updates on all our fundraising efforts and stories about our patients. We want to ensure that as a valued supporter, you understand the impact you have on the hospice and how you enable us to help our patients and their families.

We continue to work in partnership with Oxford University Hospitals NHS Trust (OUH) and together we aim to increase our reach and the number of patients that we care for. We need your support to do this, and we will continue to place ourselves at the heart of our community as we do. The pandemic has hit all charities hard, and we are no exception. Despite this, we continue to work tirelessly to #MakeEveryMomentMatter for our patients and families.



In this edition of The Rose, you will read about our achievements over the last year, especially all of our activity over Christmas. You will hear how people have been raising money for us, the stories of our patients and families and an opportunity for you to meet new members of the team.

It is also an exciting time at Katharine House as we plan for the year ahead, look out for news about the events we have planned. We will continue to keep you all updated on social media too, so do look us up and follow us on Facebook, Twitter and Instagram.

I continue to be exceptionally proud to lead an organisation that has made, and continues to make, such a difference to the people of our community. Thank you for your support and for reading our update. Please get in touch to let us know what you think.

Trevor Johnson
Chief Executive

Open Gardens scheme in full bloom!

Our Open Gardens scheme is back and more blooming marvelous than ever!

Once again, whole villages are getting behind the scheme, opening up their beautiful gardens to the public, raising money for the hospice in the process.

Visitors will get the chance to browse stunning plantings, flower gardens, water features, floral borders, orchards, and a whole host more.

Community and Events Manager Cherida Plumb: "The ever-popular Open Gardens for Katharine House have given a vast amount of pleasure to thousands of people over the years and are also a great opportunity for people to show off their gardening handywork!"

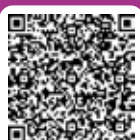
"We've been very touched by the enthusiasm of our supporters to open their gardens for us over the years and are looking forward to seeing how the gardens have developed over the last year, and being introduced to new ones too."

For a fun, family friendly day out, visit khh.org.uk/gardens to find participating gardens



We need
your feedback.

Take part in our survey to help us improve our communication



Bereavement – we're here for you



Katharine House Hospice exists to care for people with life-limiting conditions, ensuring that the remainder of their life is as good as it possibly can be. And this extends to providing a listening ear for family and friends who are left grieving over the loss of a loved one.

We recently spoke with Ann Durkin who accessed our bereavement service following the death of her husband in 2020.

After caring for her husband Peter through years of debilitating illness, Ann Durkin finally had to watch him die through a glass screen, unable even to hold his hand.

The trauma of that loss during the early days of the Covid pandemic in April 2020 and then the loneliness of grieving in isolation, kept apart from family and friends by the strict lockdown rules, left Ann struggling.

She realised she needed help and turned to Katharine House Bereavement Support Team.

"I thought I was doing OK but six months on, I realised I was really struggling," recalled Ann, who had spent years caring for her husband, who suffered from a rare form of Motor Neurone Disease.

"I had never opened up to anyone before about Peter's long illness and the shocking circumstances of his death, so having someone at the end of the phone to listen to me was so valuable."

"When I first started talking to my support worker, I hadn't even been able to pick up the phone to call my friends I was feeling so low. I had acute physical pain throughout my body because of everything I'd gone through."

"I never actually met my support worker, as Covid meant we couldn't meet face to face, but our regular phone calls over about eight months meant so much to me."

"She reassured me there is no right or wrong way to grieve and suggested special techniques which really helped. There was never any judgement of what I said or how I felt and it was so reassuring."

"When you talk to family or friends, you are emotionally connected to them and concerned for them so you don't want to unload on them."

"Often people just don't want to talk about death, but this support meant I could share my experience and sharing somehow made it easier to cope," Ann said.

"There is still a big gap in my life without Peter, I always thought he was the person I would grow old with, but thanks to the help I've had, I am in a very different place now."

*Interview carried out by Anne Adams



Our bereavement services are here for you



Did you know that our bereavement services are open to anyone – whether or not your loved one received care from Katharine House?

Coping with the loss of someone special is difficult and can be painful. Grief may leave you feeling sad, lost, guilty, confused, relieved and exhausted, all at the same time. There may be many changes and adjustments to be made and you might have questions or feel you need practical and emotional support.

If you feel like you need a little support, Katharine House bereavement service is here for you, giving people the chance to talk in confidence about their feelings and experiences following a bereavement. Volunteer support workers can make home visits, or people can visit our hospice in Adderbury. We also run a monthly bereavement café every first Wednesday where people share and explore experiences with others in a confidential and respectful environment.

For more information about bereavement services, visit khh.org.uk/bereavement

Christmas round-up

What an amazing Christmas of fundraising we had: a massive thank you to everyone who participated in an event and donated to our Christmas appeal.

Christmas appeal update

Our wonderfully generous supporters managed to raise a fantastic £58,457.51 by donating to our Christmas Appeal! These funds will go towards helping local people get the care and help they need during such a challenging time in their lives. When time is so precious, it's the little touches that make all the difference – a home cooked meal, having a beloved pet come to visit, being able to watch the sunrise and receiving personal care tailored just for you and your loved ones. You have made this all possible with your donations. Thank you for your generosity – we simply could not do the work we do without your support.



The Santa Fun Run

Katharine House's Santa Fun Run returned to Spiceball Park with a bang in December. We were joined by almost 400 people running 5k or 1.5k on a cold Sunday morning, sporting a fetching line in Santa suits and, of course, broad smiles.

Alongside this, 32 schools and nurseries joined in with the second year of our Schools Santa Run, with thousands of children from tots to teens running throughout our Challenge week. We're especially proud of our schools as they managed this while struggling with high levels of absence due to Covid. There is still money to come in but, so far, the fundraising total from all those Santas who ran for us, is over £45,000.

Christmas Tree-cycle

This year we trialled our very first Christmas Tree-cycle and we got off to a flying start, recycling 107 trees in a limited number of postcodes to the south of Banbury. In 2022, we're offering this service to a larger number of postcodes, so keep an eye on our website and sign up to the e-newsletter for further updates. We will take away your real Christmas trees and chip and recycle them. All you have to do is book your tree in and make a donation.

Thank you to Just Helping, Acreman's Arboriculture Ltd, Amazon (Banbury), Martyn's Mini Moves, David Randall Fencing and Tree Work, Salt Way Farm Shop and Warwickshire Christmas Trees for helping make it happen.



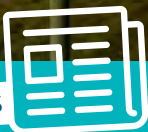
Tractor Run

Well, what can we say about the Tractor Run? What another phenomenal effort from our farming community, led by RC Baker. We had 100 tractors taking part, including one from the hospice itself. As ever, the efforts of the farmers was first class and the tractors looked a-ma-zing, with Tractor 57 winning the best dressed tractor prize, as voted for by Facebook fans. The 2021 Run raised over £20,000 again, which is superb! ... and, yes, there will be a 2022 Tractor Run!

Krone Forage Solutions also went that extra mile and held their own Christmas Tractor Tour in local villages in the lead up to the Tractor Run, raising over £1,600. We would like to say a huge thank you to RC Baker, especially Jennie, for spearheading this amazing event. Also, thank you to local businesses: Brew Box, Buzzy Beans, Cheffins, Farol Limited, Hadsham Farm, Ride on Time, Tarmac and UTV Products.

Keep up with what's
happening at KHH

Our monthly supporter's newsletter will keep you in the loop. Sign up via khh.org.uk/newsletter



Thankfully, 2021 saw a return to events again! The team were keen to help you get out and about and get you ticking things off your bucket list after being shut away during lockdown for so long. Here's a look at some of the firm favourites that made a welcome return to our fundraising calendar.

Firewalk

In September, 30 of our most intrepid supporters joined us at our second Firewalk event. While our nervous walkers underwent training and motivation for their upcoming test on hot coals, friends and families were entertained by Pete Watkins music and fed on pizzas from Jojo's Dough on the Go. The event was a great success and raised a magnificent £8,500.

Take on your own challenge



If you would like to participate in a challenge event – whether this is walking, running, cycling or something else from your bucket list – you can find a wide choice on our Challenge Events page on our website khh.org.uk/challenge



Lights of Love



In addition to hosting a full timetable of fundraising events, we strive to hold initiatives that give back to the community. We were delighted to be able to host Lights of Love again last December, having to resort to a virtual event the previous year. It was an emotional evening where people took the opportunity to reflect and remember those we have lost.

Oxford Half

In October, we returned to the wonderful sites of Oxford for the Oxford Half Marathon. We had a team of 20 runners in last year's event and they raised between them a phenomenal £14,500. This year we're returning to Oxford again, but this time as one of the event's partners, as we aim to enter a team of 30. Is a half marathon on your bucket list? Would you like to take that next step up in your running ambitions? Why not sign up now and join Team Katharine House at this year's Oxford Half? khh.org.uk/oxford



MOONLIGHT WALK 2022

We're bringing back the 80s with our popular flagship fundraising event this July.

Dig out your leg warmers and shoulder pads and join us for Katharine House's Moonlight Walk (previously the Midnight Walk) on Saturday 16 July.

Our supporters told us how much they missed doing the event in the evening, so we've changed the timings back to make this a Moonlight Walk, giving participants the chance to enjoy Banbury from a new perspective.

Starting at Easington Sports Football Club in Banbury from 9pm, participating walkers can choose from a 6 or 10-mile walk, and enjoy all the usual fun and frolics that people have come to expect from a Katharine House fundraising event.

So please get signed up to join us this year – we want to make the walk the biggest and best we've ever had.

Katharine House Community Engagement Manager Cherida Plumb said: "We're so excited for this one! The 80s was such a colourful, larger-than-life decade and we can't wait to encapsulate that energy into our annual event."

Amongst those taking part will be the family of Becky Moyce. Becky was just 41 years old when she passed away at Katharine House Hospice in July 2021. Her sisters and husband spoke to us about the impact Katharine House had on Becky.

Lizzy, Becky's younger sister, said: "Becky was my wonderful sister, but also the most amazing person I've ever met. She was the heart and soul of our family. Whenever she entered a room, it lit up and you always felt better for seeing her.

"She had an inherent sense of right and wrong and would always champion a good cause, from helping people in small ways, to the charity and fundraising work



SIGN UP WITH A
**10%
DISCOUNT**

To entice you to join us this year, we're giving you a special VIP code to get 10% off the ticket price at the time of booking. Just enter **MOONLIGHT10** when prompted ahead of paying.



she did – including Katharine House and a women's charity in India – to the demonstrations and marches she went on and her care for the climate and environment."

Becky's grieving husband Dean said Katharine House allowed him to be with his wife 24/7. "This was really important to me, as I wanted to be by her side constantly" he said.

"Becky turned 41 on 31 May 2021 and the hospice supported me and Becky's family to make her final birthday special. Her room was covered in flowers from her family and many friends. The kitchen made her scones, and she had a pamper day with champagne. We all sat outside in the garden and enjoyed the sunshine.

"Becky loved being outside in the sunshine. The hospice allows you to make those special moments happen."

Older sister Abi agreed. "There was amazing support in ensuring she was as comfortable as possible following her transfer from the hospital" she said.

"The staff were brilliant in their care. Always considerate, kind and gentle. Becky, and other patients, were their primary focus, but they welcomed us all, spending time talking to us, explaining what was happening and laughing with us. Nothing was ever too much trouble."



Read more about Becky on khh.org.uk/beckys-story

It has been a whirlwind of a year for Katharine House. On top of the unprecedented times of Covid, the hospice has also seen some big changes and landmarks in the last financial year.

In April, we were delighted to launch our partnership with Oxford University Hospitals NHS Foundation Trust (OUH), ensuring the survival of our Inpatient Unit which was in danger of closing. Since then, our clinical teams have cared for around 800 patients, supporting them at the hospice, in their home and in hospital.



Our bereavement team supported nearly **150** family and friends

Our community nurses received around 300 new patients in the last year, ranging from 20 years of age to 99 years old. The team supports around 350 people at any one time, caring for a range of illnesses including numerous cancer types, heart disease, liver failure, muscular dystrophy, Covid-19, multiple sclerosis, Alzheimer's and Creutzfeldt-Jakob disease (CJD).

Over 150 people stayed at our Inpatient Unit, occupying beds for almost 3,000 days in total. Our bereavement team supported nearly 150 family and friends who had suffered the loss of a loved one, including 13 who were aged under 18-year-olds. For more information about our bereavement service, see page 4.



Our community nurses received around **300** new patients

Just one month after launching the partnership, we welcomed our new CEO, Trevor Johnson, who had spent the previous ten years building income generation at Havens Hospice in Kent.

Trevor was inspired to work in the hospice sector having experienced first-hand the amazing care that was provided when his mother and brother both died, six weeks apart. He said, *"We simply wouldn't have got through things as a family without the support from the local hospice. I didn't know much about hospice care before that, but I certainly had a new appreciation for it afterwards."*





“On our visits we were struck by the calm and peaceful atmosphere at the hospice, and how welcoming the staff are to visitors.”



Over **150** people stayed at our Inpatient Unit



After a year of cancelled and scaled back events due to Covid restrictions, we were delighted to be able to return to our fundraising calendar – welcoming participants back to our flagship Midnight Walk as well as a full programme of Christmas fundraising events, including our popular Santa Fun Run, Tractor Run, and Christmas tree-cycle, which all helped us raise much needed funds for the hospice. For more information on our Christmas round-up, see page 5.

In October, we marked a very special anniversary – 30 years since the hospice was officially opened by HRH Princess of Wales. Since opening its doors, the hospice has supported more than 13,000 patients and our supporters were quick to wish us many happy returns!



The CNS team supports around **350** people at any one time

The celebrations continued on 19 November with a royal visit from the HRH The Duke of Gloucester who met with patients, volunteers and staff, before unveiling our memorial Celebration Tree where family and friends can leave a special dedication for their loved ones.

It has certainly been an interesting time for Katharine House recently, and we are excited to see what the next year brings!



Since opening, the hospice has supported more than **13,000** patients



If these stories have inspired you to fundraise for our hospice, why not visit our website and take a look at some of the challenges on offer? www.khh.org.uk/challenge



OUR SUPPORTERS

We see so many examples of incredible kindness, generosity and determination when it comes to our hospice. Here are just a few ways our brilliant supporters have been helping recently.



£3,000 raised



£4,000 raised

What a result!

If you're a football fan, then Phil Lines may be a familiar name. He's a bit of a local sporting legend, whose football career has spanned five decades – first as a player and later as a manager.

In honour of Phil's services to football, the Phil Lines Testimonial match was held at the start of September – with all money raised from the event donated to Katharine House.

Over 350 supporters attended the night of football nostalgia at Addison Road, Home of Easington Sports FC and helped to raise more than £3,000 for our hospice.

March together

The team from International Women's Day Banbury were back again this year with a series of arts, community and business events during March. The aim? To promote gender equality and help #BreakTheBias as part of the global IWD campaign.

We were thrilled to be chosen as the charity for 2022 in memory of Becky Moyce, who died peacefully at our hospice last summer.

Read more about Becky's story on page 6.

Tri your hardest

With a 750m swim, 20km bike ride and 5km run – a triathlon is certainly no walk in the park. Daniel Stafford recruited five friends to take on the Blenheim Triathlon with him in memory of his mum Shauni, who spent her last weeks being cared for at Katharine House.

Daniel said: "She received outstanding care and support, as did we, her family. Despite being in the grips of another lockdown, they enabled us to spend precious time with mum whenever possible."

Three cheers for Daniel, Matty, Phil, Pete, Aaron and Andy for helping to raise just over £4,000 for our hospice.



Fundraising in Florence

When it comes to traditional ways to celebrate your birthday, running a marathon isn't usually at the top of most people's list! But that's how Poppy Hawkins celebrated her birthday weekend back in November. And she certainly did it in style, signing up to the Florence Marathon and raising more than £1,500!

Poppy said: "My cousin recently lost his wife to cancer and she was looked after at the hospice towards the end. It's great to be able to support such an amazing local charity that has supported a lot of friends' loved ones over the years as well."

£1,500 raised



Freya's 50k

Back in September, seven-year-old Freya proved that you're never too young to take on a big challenge when she committed to running 50km during the month. Through her hard work and perseverance, she raised over £1,500 for our hospice – which is just incredible.

Freya, who turned eight shortly after completing the challenge, said: "I ran 50km to help people with cancer. My daddy had cancer and I also heard about his friend Robbie's wife and wanted to help other people like them. I find running very hard with my 2cm legs but kept going to the end."

£1,500 raised

Sew thoughtful

The brilliant Banbury Cross Sewing Circle got in touch a little while back with an offer to create some syringe driver carry bags for our Inpatient Unit (IPU). The bags are a convenient way for patients to carry syringe drivers with them to deliver medication.

Keen sewer Jane Coomber said: "We became aware of the benefits of syringe driver bags and decided to make some for the hospice with material donated by our members. We are proud to have donated a total of 11 syringe driver bags so far to Katharine House."

OUR LOCAL BUSINESSES

We couldn't do what we do without the wonderful support from our local businesses. Here's how they've been helping.

Higham Critchley Barrows take on the challenge



Dale, Peter and David taking part in the Santa Fun Run

Since 2019, Dale, Peter, and David from Higham Critchley Barrows have raised over £11,000 of vital funds to support the hospice. They have already taken part in two Santa Fun Runs, a Wingwalk and the Oxford Half Marathon and this year their fantastic support will continue when Peter takes on the 127m Abseil Challenge in April, plus a Skydive in May. Good luck Peter!

Fundraising at Christmas

We would like to give a special thanks to the corporate supporters who fundraised for the hospice at Christmas, including: Avara Foods, Banbury College, Bicester Health Centre, Brita, Buckingham Group Contracting Ltd, CMS Wealth Management, Dematic, John Nicholls, Loft Beauty Rooms, Losberger De Boer, Maxwells, Norbar, Royal Mail (Banbury depot), Spratt Endicott Solicitors, Toby Electronics, Turney Group, TWE Haulage, Whitley Stimpson and Wykham Park Farm Shop.

Sweet touch provided by Zurich

We are extremely grateful for the continued support the hospice receives from the Zurich employees in Chipping Norton through the Zurich Community Trust. Not only have they recently donated £10,000 to help provide vital care for our patients, but they have also donated their precious time. At Christmas, the staff donated 300 boxes of chocolates for our patients in the community and put together 10 beautiful Christmas hampers for our patients in IPU. The patients and their families were overwhelmed by their generosity.



KHH staff Chelsea and Helen receiving the Zurich Christmas hampers



Andy and Luke from JDE volunteering at KHH shops

JDE pledges ongoing support

JDE have been supporting Katharine House for over 14 years through the regular donation of tea and coffee products for patients and staff, plus volunteer days, both in our garden and shops. The hospice has been JDE's Charity of the Year for a number of years, and they continue to provide generous donations – the latest being a whopping £11,000.

Rob Williams, Banbury Plant Director, commented: "The hospice plays such an important role for so many people in the area, and I know our teams are always keen to support them however they can, whether through volunteering, fundraising or by topping up their coffee supplies."

Charity of the year at DHL Supply Chain

Staff at DHL Supply Chain in Banbury have supported the hospice for many years and we have been nominated as their Charity of the Year once again in 2022. Through a combination of raffles, bingo, the tuck shop and cake days, the amazing team at Cherwell Site 1 raised £5,000 last year with the help of employer matched funding. We look forward to working with them again this year and can't wait to see what fantastic fundraising ideas they come up with.



DHL Site 1 staff working at the charity tuck shop

Meet the team

Meet our Community Engagement Officer Sue! You may well already have seen her smiling face at one of our events or out and about meeting local businesses. We caught up with her to find out a bit more about her role, her proudest moment and her favourite biscuit – and a few things in between.

Name: Sue Blank

Job title: Community Engagement Officer

Joined the team: November 2021

If I had to sum up my role in one sentence, I'd say:

Supporting our amazing corporate and community fundraisers.

The best thing about my job is:

Meeting so many incredible and generous people, plus working with such a caring, dedicated and hardworking team.

My highlight since joining Katharine House is:

Definitely the Santa Fun Run! It was such a great atmosphere and felt incredible to be part of it.

When I was growing up, I wanted to be:

A photographer. It's still one of my hobbies, although I often end up in front of the camera as part of my role.

The best advice I've ever been given is:

Don't sweat the small stuff. Always be kind and honest. Also, the best place to buy your flowers from is Aldi.

People are often surprised when I tell them:

I am from Italian heritage but can't speak a word of Italian.

When I'm not at work, you will probably find me:

In the garden or upcycling furniture.

My go-to biscuit is:

Chocolate digestives – dunked, always!

My all-time favourite film is:

Love Actually

I'm currently listening to:

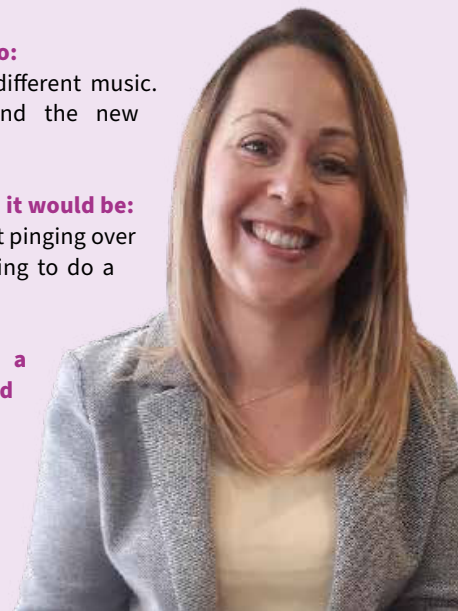
Radio 2. I enjoy lots of different music. Postmodern Jukebox and the new Tears for Fears tracks.

If I had one superpower, it would be:

Teleporting – imagine just ping-ponging over to Australia and not having to do a 24-hour flight!

If I was stranded on a desert island, I would want:

A boat to get off the island.



Ongoing support

And finally, an extra big thanks must go to our other corporate supporters who continue to support the hospice, including: GMB Union, Bloxham Mill, Cleenol, Jet Flo Pro, Mayday Employment, Paw Paw, Karcher, Stratton Thorpe Mortgage Solutions, Brethertons and Aplins. We couldn't do what we do without the vital support of local businesses and we are very grateful for your continued support. Thank you.

If you're a local business and want to learn more about supporting Katharine House, visit our website khh.org.uk/pages/category/corporate



What would you like your legacy to be?



To care for those who need us the most?

When the time comes to write or amend your will we realise that you want to ensure your loved ones are looked after. We understand the importance of friends and family, especially in times of need. A gift of just 1% of your remaining estate can make a significant difference to your local community for years to come, enabling those in need to receive free personalised care and make every moment matter when their time is so precious.

IF YOU WOULD LIKE TO LEAVE A LEGACY OF CARE FOR YOUR LOCAL COMMUNITY AND HELP THOSE WHO NEED OUR SUPPORT, SIMPLY FILL IN THE FORM BELOW TO RECEIVE OUR FREE LEAFLET.

Please send me more information on how I can leave a gift in my will to Katharine House

Title _____ First Name _____

Last Name _____

Address _____

Postcode _____

Telephone _____

Email _____



For further information on the above please visit our website www.khh.org.uk/wills or call and speak to our friendly team on **01295 816484**

Please return this form **FREE** of charge in the reply paid envelope or by sending to Legacies, Freepost Plus RTTY-ARCZ-ZAUA, Katharine House Hospice, Aynho Road, Adderbury, BANBURY OX17 3NL

DATA PROTECTION: As a supporter, you're at the heart of everything we do. We'd love to keep you updated about our work and ways you can help, as well as sharing news of events you may be interested in. We will hold your details for our own marketing, research, profiling and analysis purposes and promise to never sell or swap these with anyone else. If you would prefer not to hear from us, simply tick this box

WE NEED YOUR HELP!



We're looking to improve the way we communicate with our supporters, making sure you're hearing what you want to hear, the way you want to hear it.

Takes two minutes



We need your feedback! Could you spare two minutes to fill in a short survey outlining how you currently keep up to date with Katharine House news and your thoughts on how it could be improved.

The survey can be completely anonymous, but if you include your name and address, we'll enter you into a draw to WIN A HAMPER full of goodies!

To fill in the survey, visit khh.org.uk/survey or scan this code



What's coming up?

Don't miss out! Keep up to date with all the latest events...

DATE	EVENT	FIND OUT MORE
Apr – Sep	Open Gardens for Katharine House	khh.org.uk/gardens
Apr – Oct	Collections	khh.org.uk/collectiondays
15 May	Blenheim Fun Run	khh.org.uk/blenheim
10 – 12 Jun	Hadrian's Wall Trek – summer	khh.org.uk/hadrian
25 – 26 Jun	Cotswold Way Challenge	khh.org.uk/cotswoldway
16 Jul	Moonlight Walk	khh.org.uk/moonlight
4 Sep	The Big Half	khh.org.uk/bighalf
10 – 11 Sep	Thames Path Challenge	khh.org.uk/thamespath
18 Sep	Chicken Run	khh.org.uk/chicken
30 Sep – 2 Oct	Hadrian's Wall Challenge – autumn	khh.org.uk/hadrian2
14 – 16 Oct	Jurassic Coast Trek – autumn	khh.org.uk/jurassic
16 Oct	Oxford Half Marathon	khh.org.uk/oxford
3 – 14 Oct	Make a Will Fortnight	khh.org.uk/wills
29 Oct	Halloween Walk	khh.org.uk/halloween



KATHARINE HOUSE HOSPICE

Play our LOTTERY!

Your chance to WIN



Find out more at www.khh.org.uk/lottery



**KATHARINE
HOUSE
HOSPICE**



Moonlight Walk



Saturday 16 July

- >> Gates open at 6.30pm
- >> 10-mile or 6-mile walk, in Banbury
- >> Pre-walk entertainment and stalls

Scan here



Sign up at www.khh.org.uk/moonlight